

ArciTech Drawer System

2021 Range



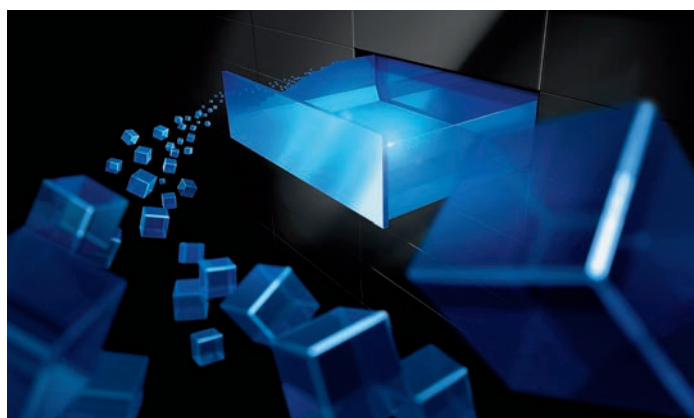
Level up your double-walled drawer choice with the award-winning ArciTech system.

Unequalled running action with our top of the line Actro runner, ArciTech also comes as a complete system allowing you to mix the components and create several drawer types from the same base design.



Thinking beyond tomorrow

ArciTech offers great potential for standing apart while giving you flexibility and speed in responding to market demands and consumer wishes. Unequalled running action and exceptional stability that won't fail to impress. ArciTech lets you meet any design trend with convincing perfection.



Double walled drawer system ArciTech

► Summary

ArciTech Drawer Sets

- Standard Drawer 4
- Pot and Pan drawer with Railing 4
- Actro Drawer Runner 4

ArciTech Add ons

- Installation dimensions for Actro drawer runner 5

ArciTech Addons

- Bulk Components 6
- Internal drawer components 7

Interior Organisation

- Orgatray 440 8
- Orgatray 570 9

Waste Collecting Systems

- Waste collecting systems behind front panels 10-11

Assembly aids for drawers

- Bluejig 13

ArciTech double walled drawer system

- Technical Information 14-17

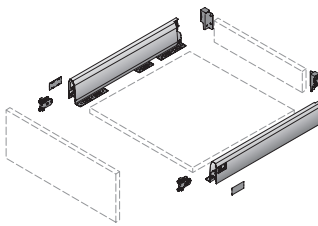
ArciTech double walled drawer system

- Assembly, adjustment, removal 18-25

Double walled drawer system ArciTech

- ▶ Drawer sets
- ▶ Actro Runner sets

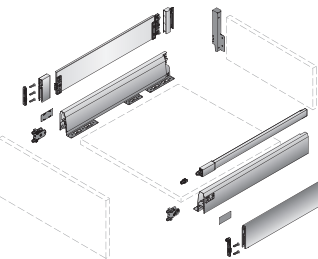
Drawer height 94 mm



- ▶ 1 drawer side profile, left / right
- ▶ 2 knock in front connectors for drawer side profile
- ▶ 2 plastic cover caps with Hettich logo
- ▶ 1 rear panel connector, left / right

- ▶ Order runners separately
- ▶ Runners not included in kit


Pot-and-pan drawer height 186 mm



- ▶ 1 drawer side profile, left / right
- ▶ 2 knock in front connectors for drawer side profile
- ▶ 2 plastic cover caps with Hettich logo
- ▶ 1 rear panel connector, left / right
- ▶ 1 lengthwise railing, left / right and 2 knock in front connectors for lengthwise railing

Drawer height 94 mm


Standard Drawer



Nominal length mm	white
450	9 253 108
500	9 253 118
550	9 253 128

Drawer height 186 mm

Pot-and-pan drawer with railing



Nominal length mm	white
450	9 253 109
500	9 253 119
550	9 253 129

Drawer runner



- ▶ Full extension runner
- ▶ With integrated Silent System
- ▶ Steel galvanised

Load capacity 40 kg

Nominal length mm	Order no. / Cabinet side		PU
	left	right	
450	9 238 773	9 238 774	15 ea.
500	9 238 777	9 238 778	15 ea.
550	9 238 783	9 238 784	10 ea.

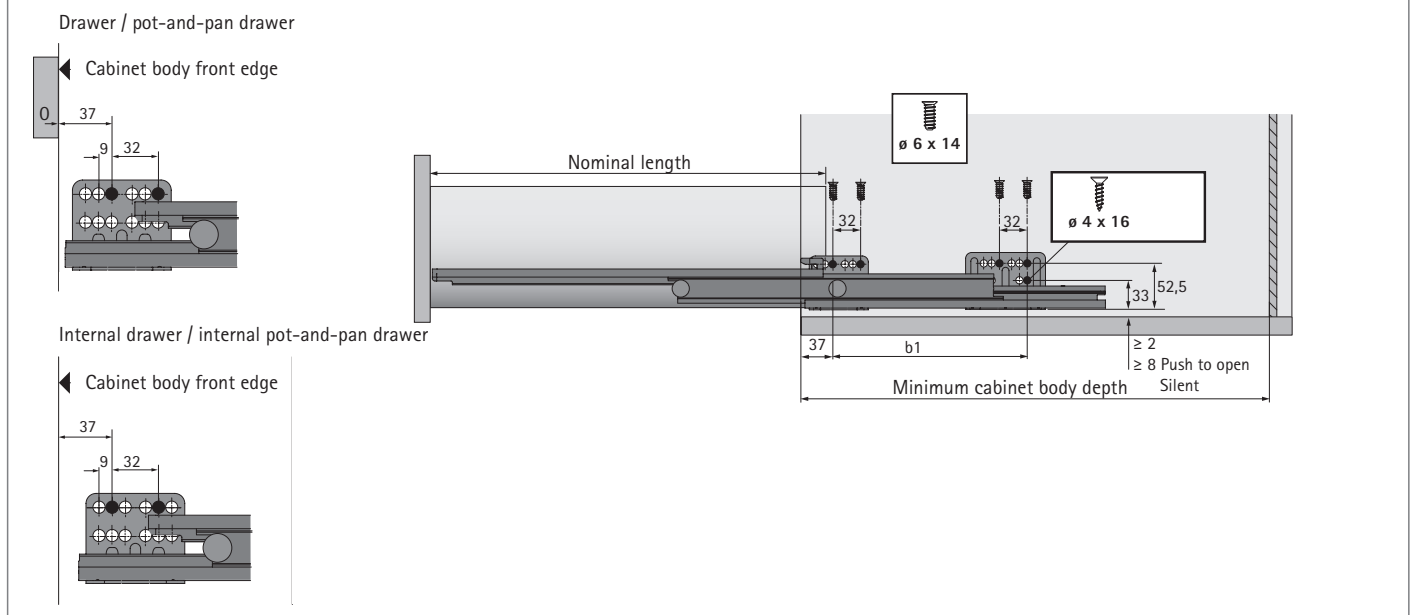
Load capacity 70 kg

Nominal length mm	Order no. / Cabinet side		PU
	left	right	
450	9 238 775	9 238 776	15 ea.
500	9 238 779	9 238 780	15 ea.
550	9 238 785	9 238 786	10 ea.

ArciTech double walled drawer system

► Actro drawer runner with Silent System

Lengthwise cross-section



Installation dimensions with Silent System

Nominal length mm	Hole spacing b1 mm	Drawer / pot-and-pan drawer Minimum cabinet body depth mm	Internal drawer / internal pot-and-pan drawer Minimum cabinet body depth mm
450	192	453	462
500	224	503	512
550	256	553	562

Double walled drawer system ArciTech

► Bulk Components

ArciTech drawer side profiles 94 mm



Nominal length mm	white		PU
	left	right	
450	9 121 247	9 121 248	15 ea.
500	9 121 249	9 121 250	15 ea.
550	9 121 251	9 121 252	15 ea.

Cover caps

- Plastic
- Cover cap with customised imprint available on request



Finish	Order no.	PU
White with Hettich logo	9 123 006	300 ea.
White	9 123 001	300 ea.
Chrome look with Hettich logo	9 123 008	300 ea.
Chrome look	9 123 003	300 ea.

Rear panel connectors for wooden rear panel



System height mm	white		PU
	left	right	
94	9 121 829	9 121 830	30 ea.
186	9 121 845	9 121 846	30 ea.

Drawer front connector for drawer side profile

- Steel / plastic



Mounting option	Order no.	PU
for screwing on	9 123 011	1/150 ea.
for knocking in	9 123 010	1/150 ea.

Railings for pot-and-pan drawers



Nominal length mm	white		PU
	left	right	
450	9 121 997	9 121 998	30 ea.
500	9 122 007	9 122 008	30 ea.
550	9 122 017	9 122 018	30 ea.

Drawer front connector for lengthwise railing

- Plastic, anthracite



Mounting option	Order no.	PU
for screwing on	9 127 011	1/300 ea.
for knocking in	9 127 000	1/300 ea.

Front stabiliser



- Recommended for
- carcass width > 600 mm
 - front panel height > 450 mm

Order no.
9 123 080

ArciTech double walled drawer system

Internal drawer components

Aluminium front for internal drawer

- ▶ For cutting to length
- ▶ Length 2 m



white
9 192 206

Railing for aluminium front for internal Pot and Pan

- ▶ Steel
- ▶ For cutting to length
- ▶ Length 2 m



white
9 182 714

Front connector for internal drawer



System height mm	white
94	9 123 084
186	9 123 090

ArciTech double walled drawer system

- Interior organisation system for drawers and internal drawers
- Plastic



- For general-purpose use
- Plastic

OrgaTray 440

Tray width mm	Minimum cabinet width mm	Nominal width mm	white		PU
			Order no. / Depth mm		
			370 – 440	441 – 520	
201 – 250	310 – 359	350	9 194 949	9 194 962	1 ea.
251 – 300	360 – 409	400	9 194 950	9 194 963	1 ea.
301 – 350	410 – 459	450	9 194 951	9 194 964	1 ea.
351 – 400	460 – 509	500	9 194 952	9 194 965	1 ea.
401 – 450	510 – 559	550	9 194 953	9 194 966	1 ea.
451 – 500	560 – 609	600	9 194 954	9 194 967	1 ea.
501 – 600	610 – 709	700	9 194 955	9 194 968	1 ea.
601 – 700	710 – 809	800	9 194 956	9 194 969	1 ea.
701 – 800	810 – 909	900	9 194 957	9 194 970	1 ea.
801 – 900	910 – 1009	1000	9 194 958	9 194 971	1 ea.
1091 – 1150	1200 – 1259	1200	9 194 960	9 194 973	1 ea.

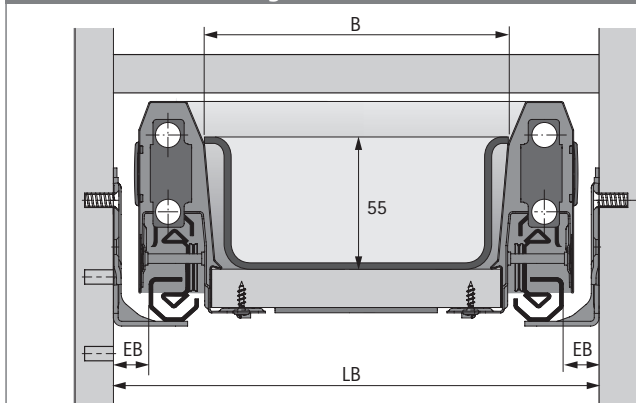
Divider

D 370 - 440											
D 441 - 520											
W	201-250	251-300	301-350	351-400	401-450	451-500	501-600	601-700	701-800	801-900	1091-1150
NW	350	400	450	500	550	600	700	800	900	1000	1200

* = knife and spice rack can be incorporated

D = Depth W = Width NW = Nominal width

Dimensional drawing



Drawer side profile height 94 mm:

- Trimmed width (B) = LB - 77
- When using edge profiles, see page 58:
Trimmed width (B) = LB - 81
- Trimmed depth = Nominal length - 27

ArciTech double walled drawer system

- Interior organisation system for drawers and internal drawers
- Plastic



- Adapted to standard cabinet body width

Set comprises:

- 1 plastic cutlery tray
- Dividing elements for organising drawers in any way (quantity differs depending on width, see illustration of drawer organisation)

Note:

- Nominal length 500 mm

OrgaTray 570

Cabinet body width mm	white	PU
300	9 135 013	1 set
350	9 135 014	1 set
400	9 135 015	1 set
450	9 135 016	1 set
500	9 135 017	1 set
600	9 135 019	1 set
800	9 135 020	1 set
900	9 135 031	1 set
1000	9 135 032	1 set

Divider

NL	D									
500	473									
W		199	249	299	349	399	499	699	799	899
CW		300	350	400	450	500	600	800	900	1000

NL = Nominal length D = Depth W = Width CW = Cabinet body width

Dividing elements



- For OrgaTray 570
- Plastic

Nominal length mm	white	PU
68	9 204 230	1/50 ea.
128	9 204 201	1/50 ea.

Waste collecting systems

- ▶ Waste collecting systems behind front panels
- ▶ ArciTech Pull



- ▶ Top running waste collecting system for ArciTech drawer, 94 mm high
- ▶ ArciTech Pull frame is fitted instead of drawer bottom panel
- ▶ Frame can be equipped as required with various bins and accessories
- ▶ Please order bin separately
- ▶ ArciTech drawer components must be ordered separately
- ▶ Powder coated steel, anthracite

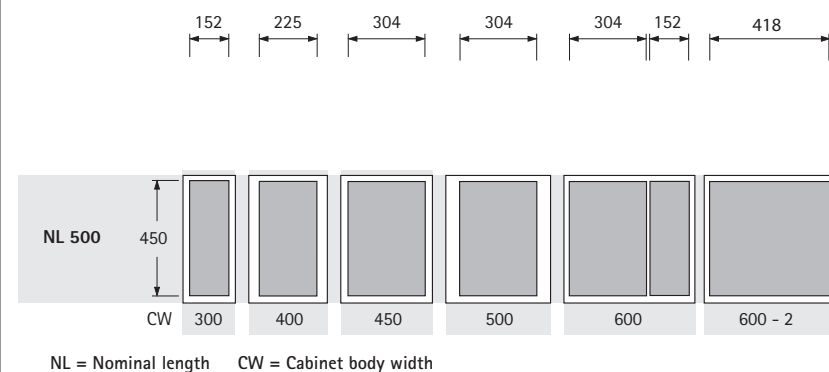
Set comprises:

- ▶ 1 fitted frame including front stay and lid
- ▶ Fixing material

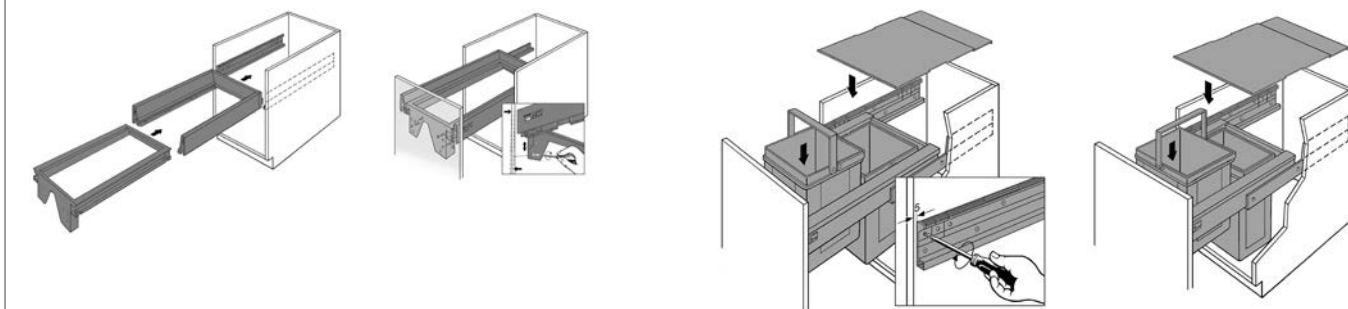
ArciTech Pull frame

For cabinet body width mm	Type	Order no. / Nominal length mm 500	PU
300		9 279 400	1 set
400		9 279 401	1 set
450		9 279 402	1 set
500		9 279 403	1 set
600		9 279 404	1 set
600	600 - 2 (for 2 x 40 l)	9 279 405	1 set

Partitioning

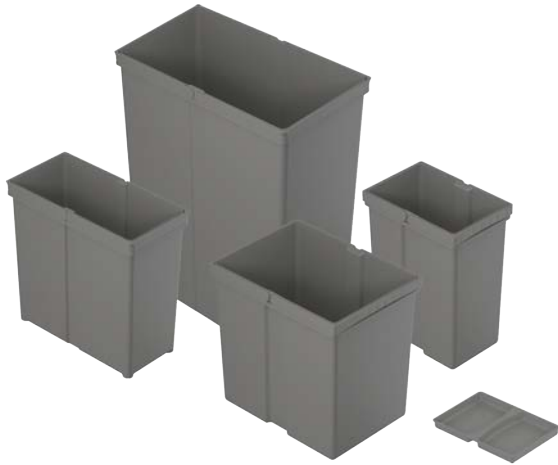


Installation



Waste collecting systems

- Waste collecting systems behind front panels
- ArciTech Pull



- For fitting any chosen component in the ArciTech Pull frame
- Plastic bin with sturdy double handle
- As standard, all bins are supplied without lid
- Lids must be ordered separately, see below
- The lid heights specified below are total dimensions, the additional height for all lids is 2 mm

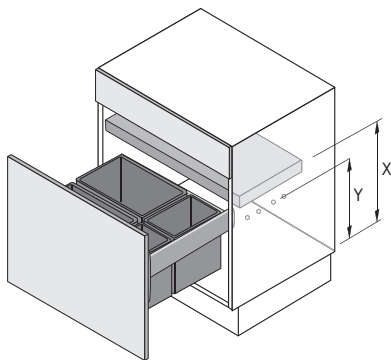
Bin

Article	Finish	Width mm	Depth mm	Height mm	Order no.	PU
Bin 8 l	Plastic anthracite	152	225	295	9 279 390	1 ea.
Bin 11 l	Plastic anthracite	152	304	295	9 279 391	1 ea.
Bin 17 l	Plastic anthracite	225	304	295	9 279 392	1 ea.
Bin 29 l	Plastic anthracite	225	304	460	9 279 393	1 ea.
Bin 40 l	Plastic anthracite	223	418	505	9 279 394	1 ea.

Lid

Article	Finish	Width mm	Depth mm	Height mm	Order no.	PU
Lid 8 l	Plastic anthracite	152	225	21	9 279 396	1 ea.
Lid 11 l	Plastic anthracite	152	225	21	9 279 397	1 ea.
Lid 17 / 29 l	Plastic anthracite	225	304	21	9 279 398	1 ea.
Lid 40 l	Plastic anthracite	225	456	21	9 279 399	1 ea.

Planning dimensions



Bin height mm	X mm	Y mm
295	385	305
460	550	470
505	595	515

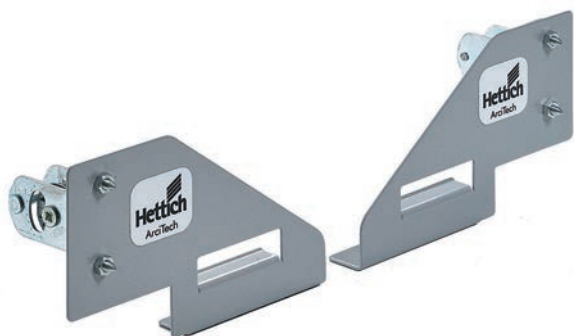
Technical and Assembly Information

To ensure the assembly of your new ArciTech drawers are done correctly, please follow this information closely.

Assembly aids for drawers

► BlueJig

BlueJig AT

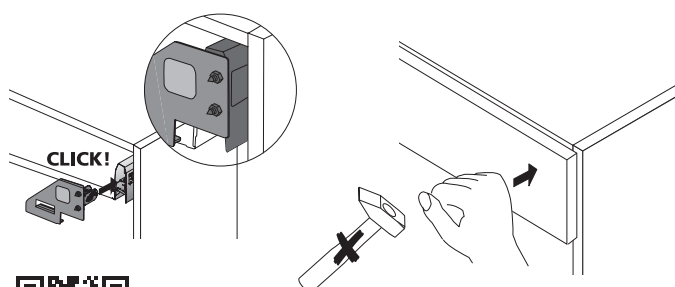


- For marking the holes for fitting ArciTech front panel connector
- Steel

Set comprises:

- 2 BlueJig AT (right / left)

Order no.	PU
9 163 229	1 set

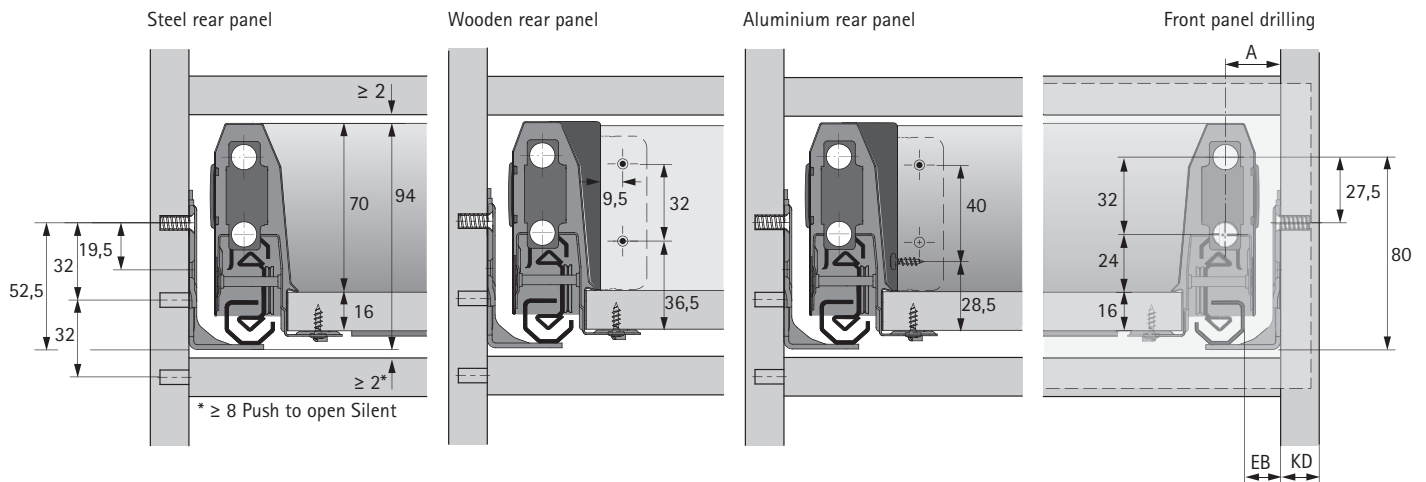


<http://www.hettich.com/short/731f6e>

ArciTech double walled drawer system

- Drawer, height 94 mm
- Technical Information

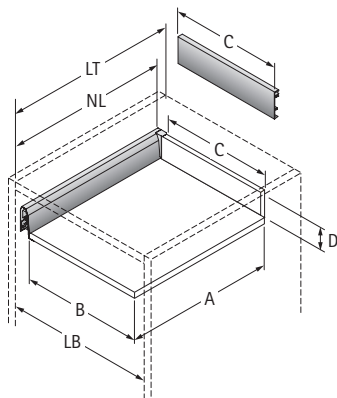
Planning dimensions



Actro installed width

KD mm	16
EB mm	15
Dimension A mm	23

Dimensions for cutting to size

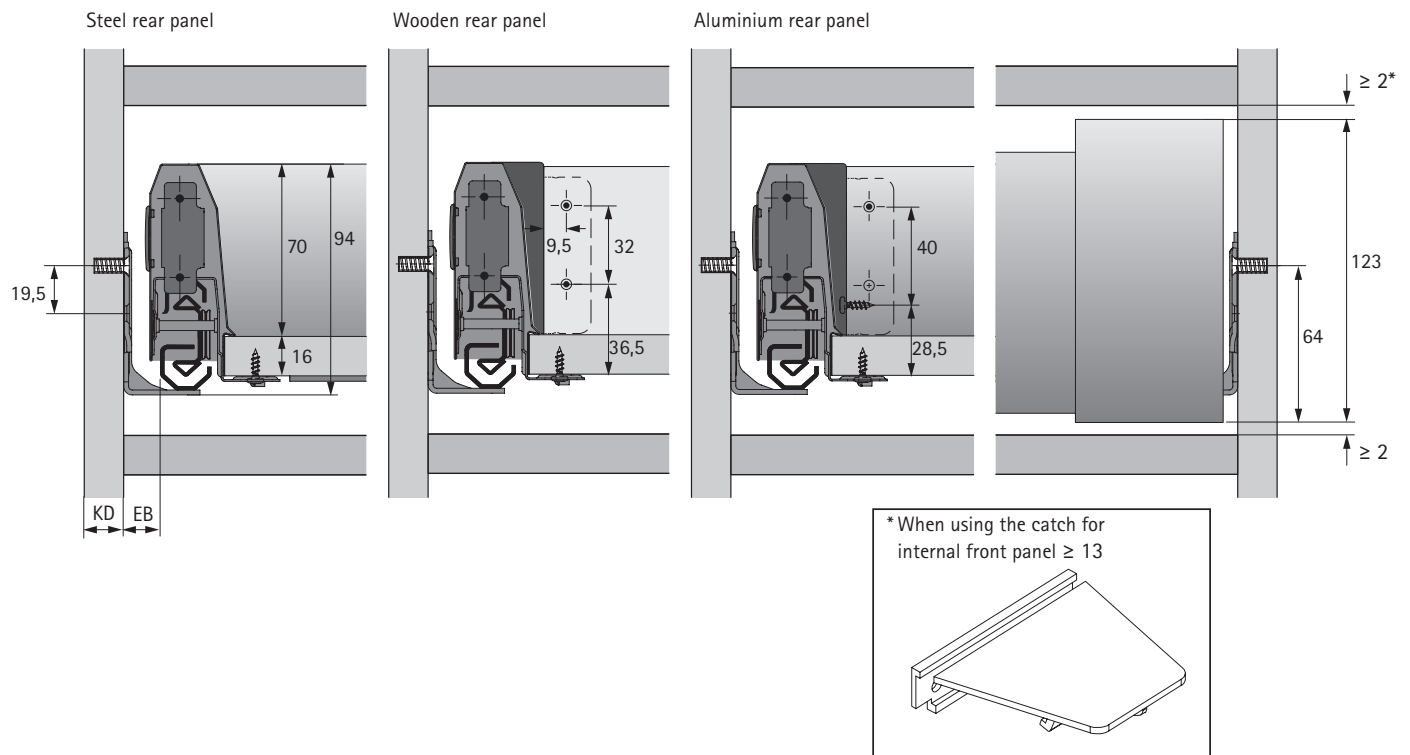


Dimension	Wooden rear panel
A	NL - 24.5
B	LB - 2 x EB - 52.5
C	LB - 2 x EB - 64
D	84.5

ArciTech double walled drawer system

- Internal drawer, height 94 mm
- Technical Information

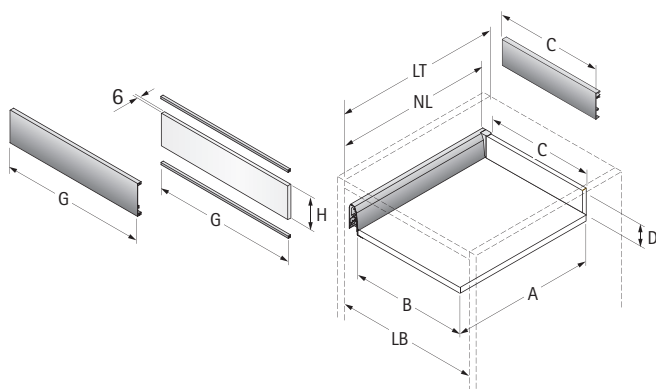
Planning dimensions



Actro Installed width

KD mm	16
EB mm	15

Dimensions for cutting to size

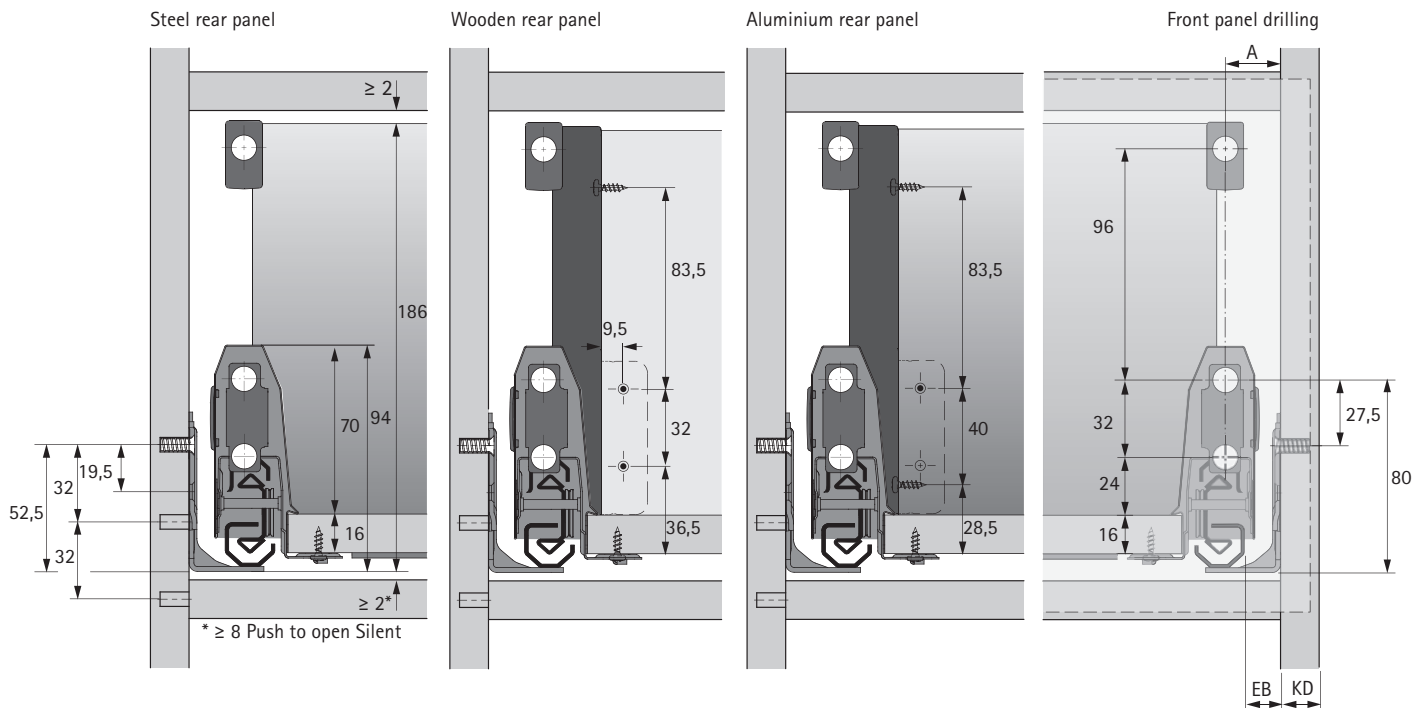


Dimension	Wooden rear panel
A	NL - 24.5
B	LB - 2 x EB - 52.5
C	LB - 2 x EB - 64
D	84.5
G	LB - 2 x EB - 62
H	105.5

ArciTech double walled drawer system

- Pot-and-pan drawer with railing, height 186 mm, drawer side profile height 94 mm
- Technical Information

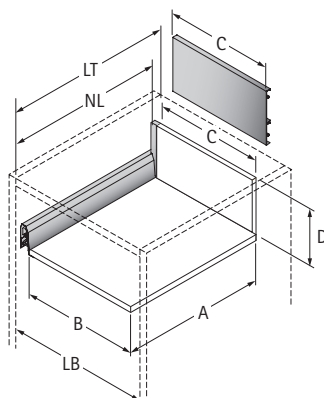
Planning dimensions



Actro Installed width

KD mm	16
EB mm	15
Dimension A mm	23

Dimensions for cutting to size

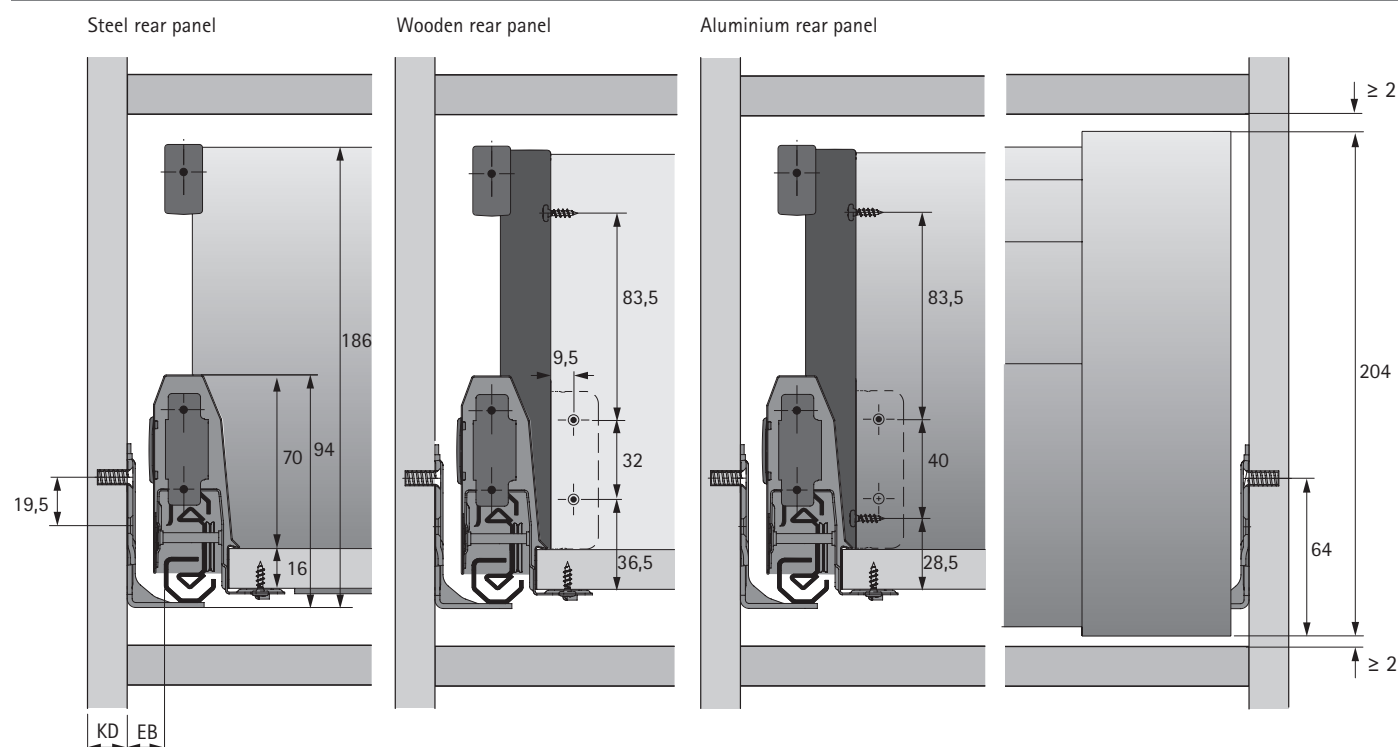


Dimension	Wooden rear panel
A	NL - 24,5
B	LB - 2 x EB - 52,5
C	LB - 2 x EB - 64
D	176

ArciTech double walled drawer system

- Internal pot-and-pan drawer with railing, height 186 mm, drawer side profile height 94 mm
- Technical Information

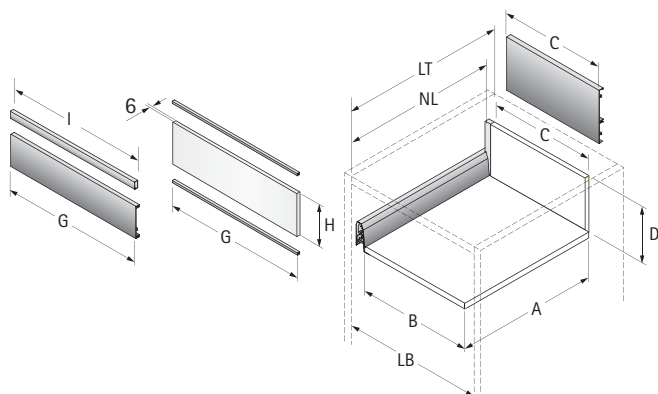
Planning dimensions



Actro Installed width

KD mm	16
EB mm	15

Dimensions for cutting to size

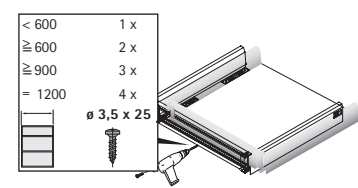
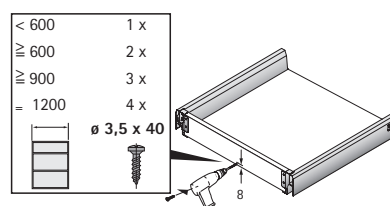
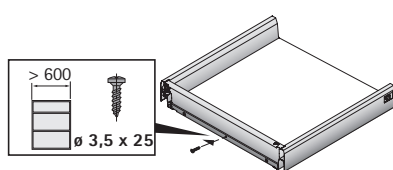
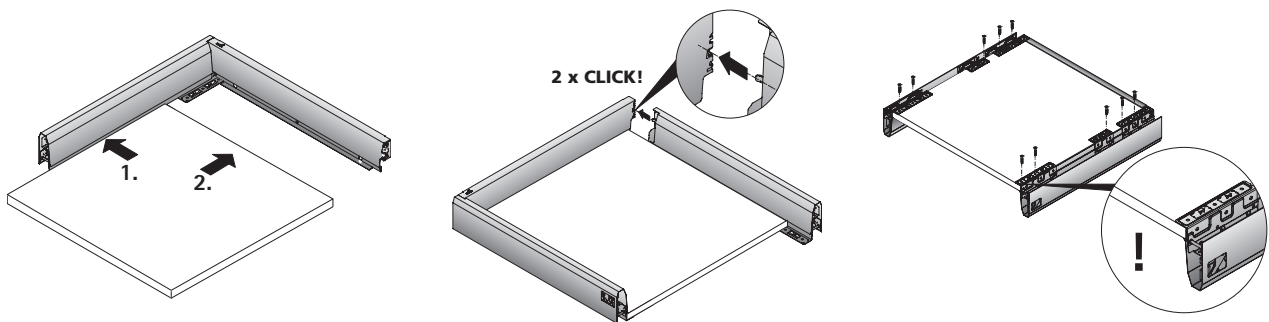
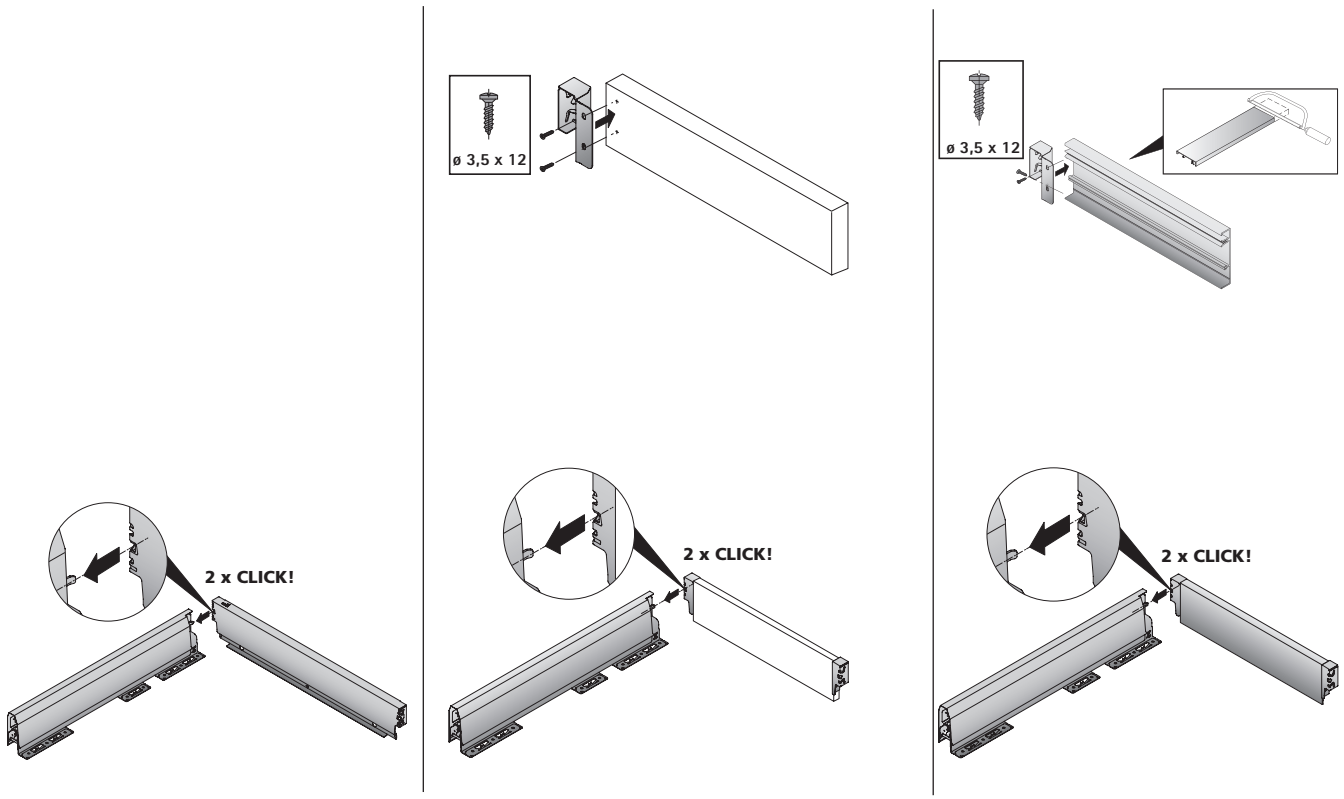


Dimension	Wooden rear panel
A	NL - 24.5
B	LB - 2 x EB - 52.5
C	LB - 2 x EB - 64
D	176
G	LB - 2 x EB - 62
H	157
I	LB - 2 x EB - 66.5

ArciTech double walled drawer system

► Assembly, adjustment, removal

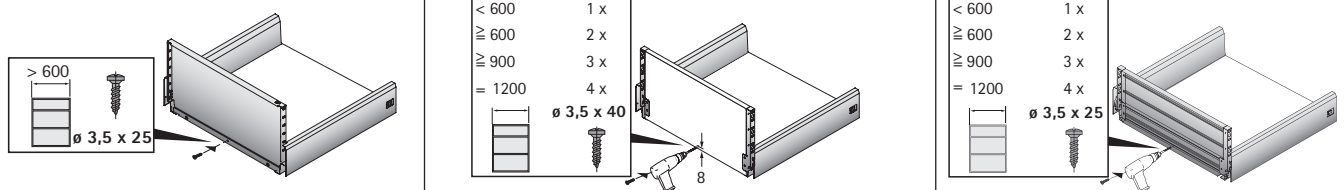
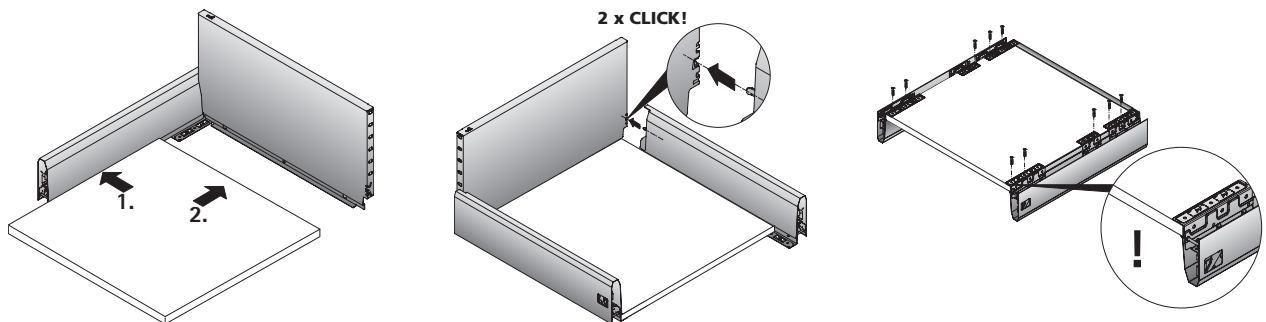
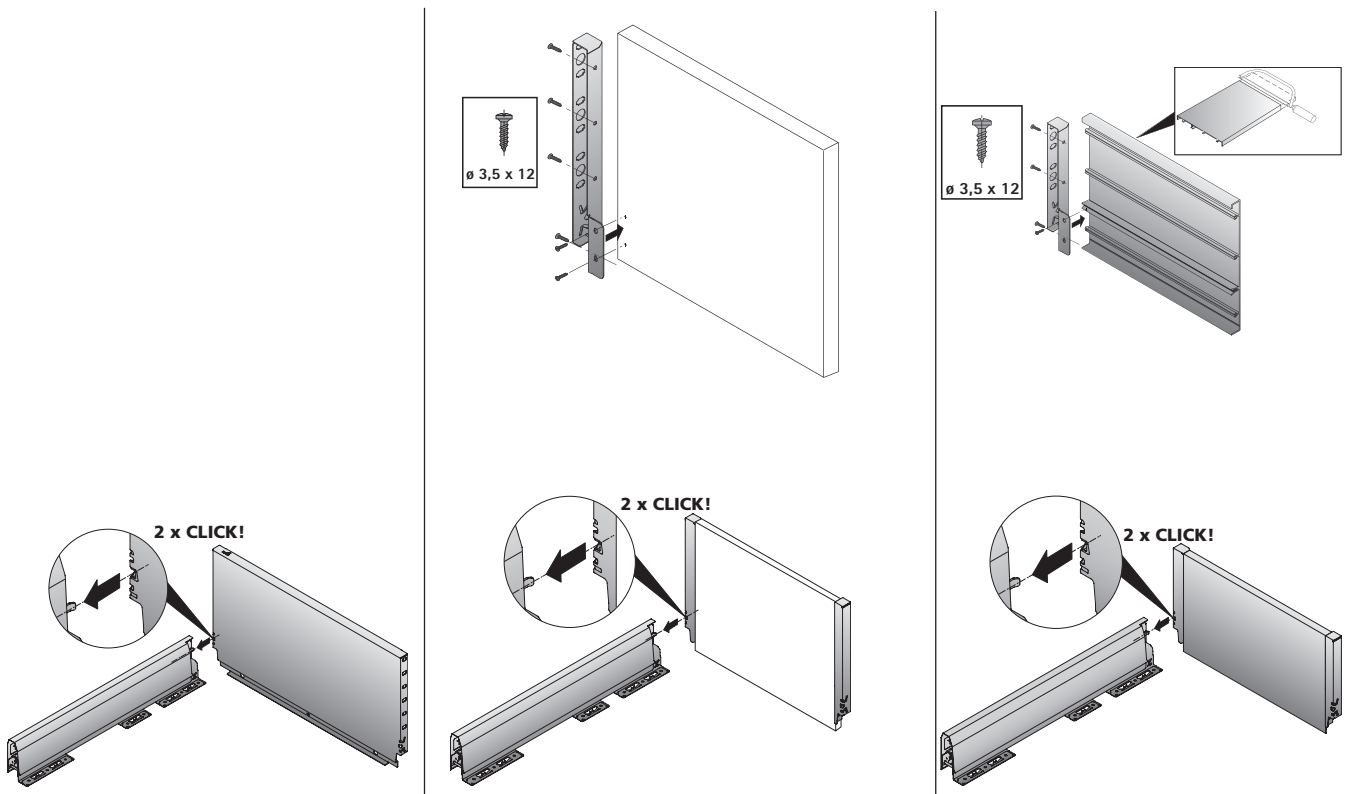
Assembling drawer, height 94 mm



ArciTech double walled drawer system

► Assembly, adjustment, removal

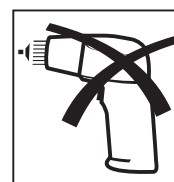
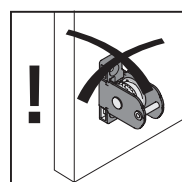
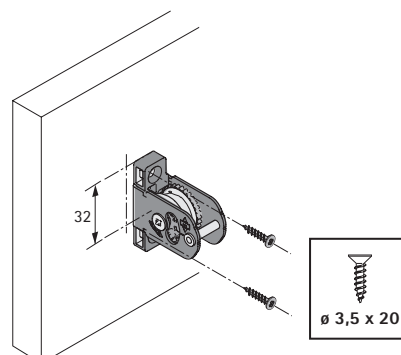
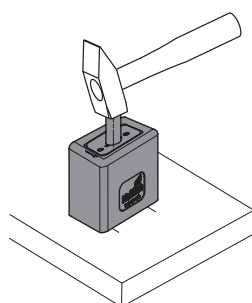
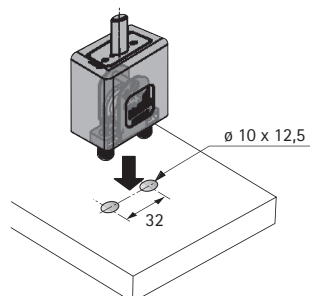
Assembling pot-and-pan drawer



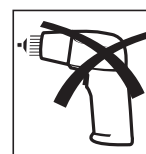
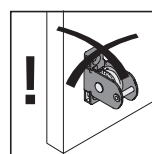
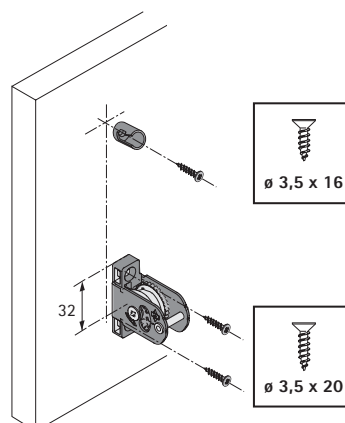
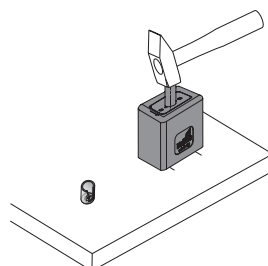
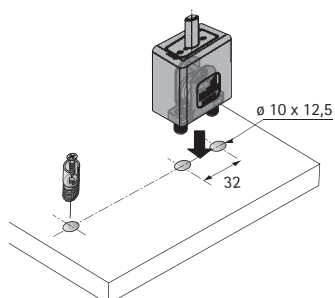
ArciTech double walled drawer system

► Assembly, adjustment, removal

Installing drawer front connector, drawer



Installing drawer front connector, pot-and-pan drawer with railing

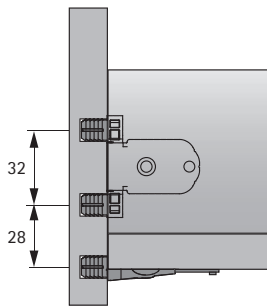


ArciTech double walled drawer system

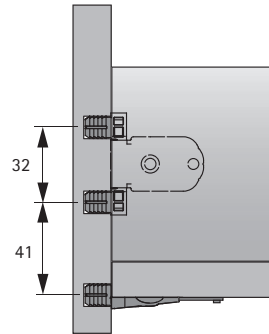
► Assembly, adjustment, removal

Installing front stabiliser

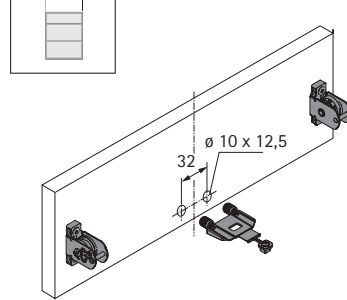
H 78



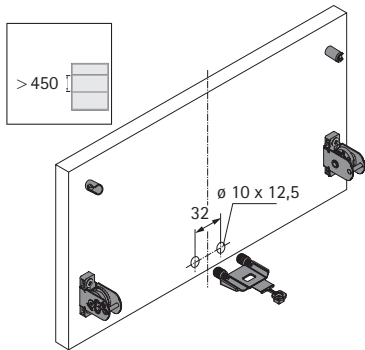
H 94 - 282



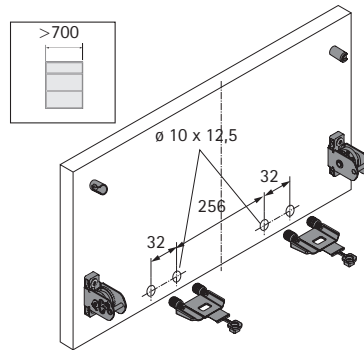
600 - 700



> 450



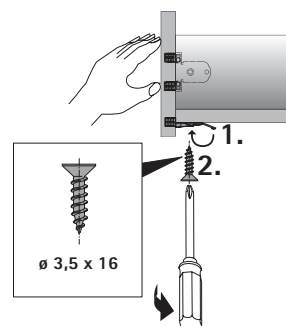
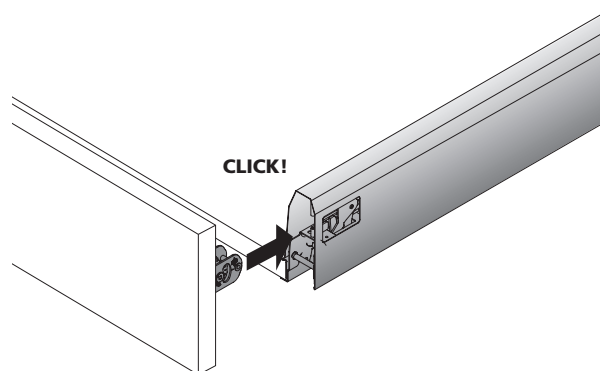
> 700



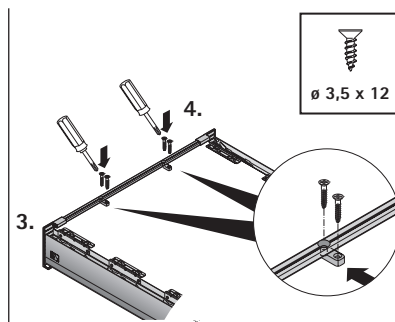
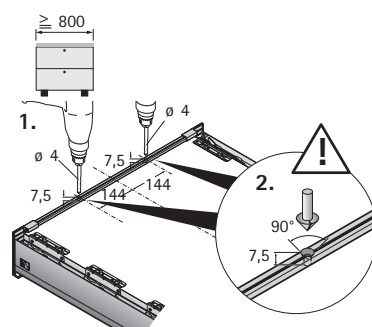
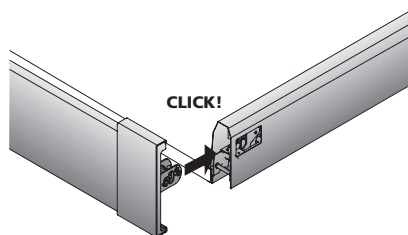
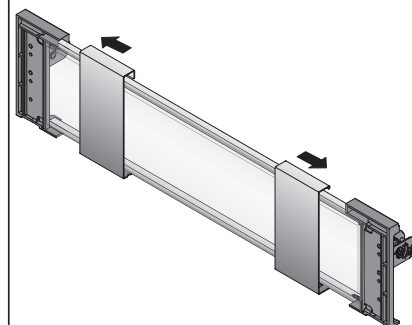
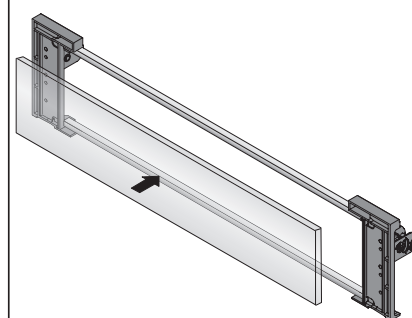
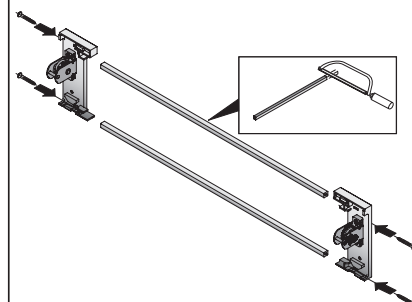
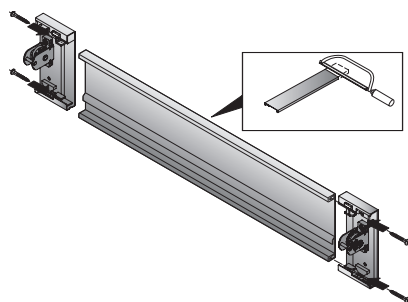
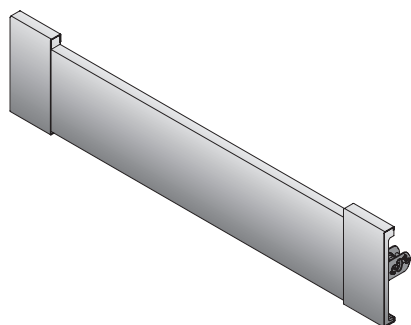
ArciTech double walled drawer system

► Assembly, adjustment, removal

Installing front panel



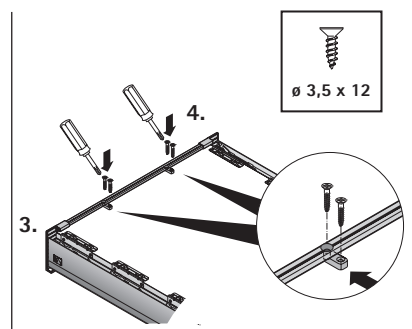
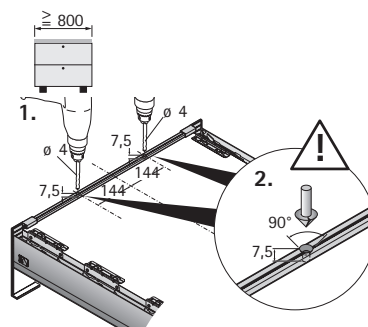
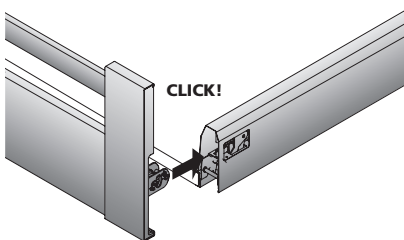
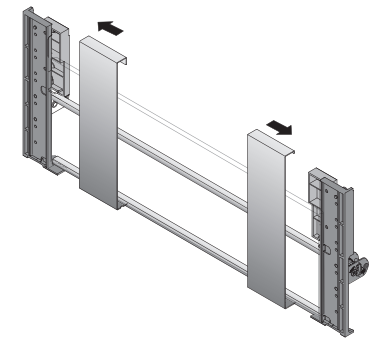
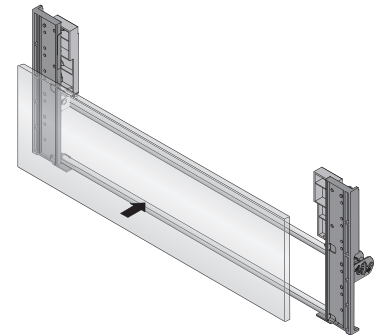
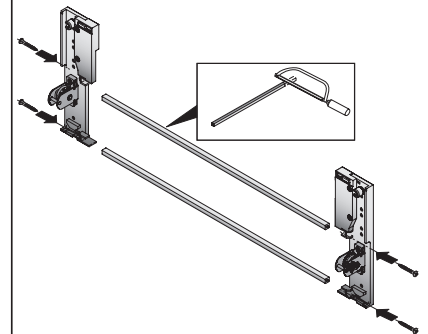
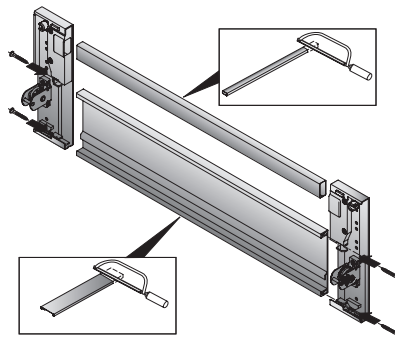
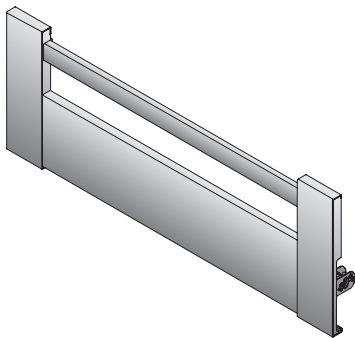
Installing front panel, internal drawer



ArciTech double walled drawer system

► Assembly, adjustment, removal

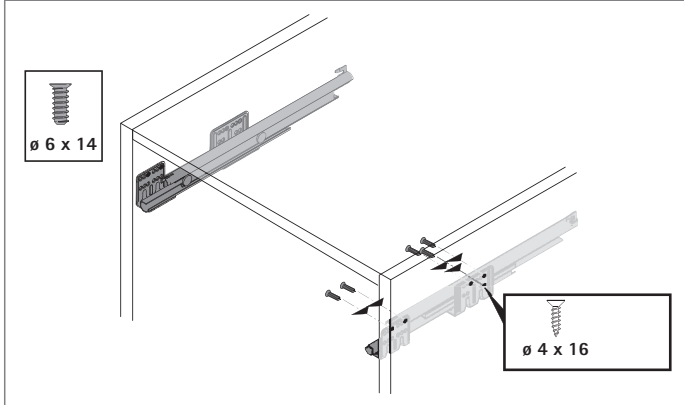
Installing front panel, internal pot-and-pan drawer



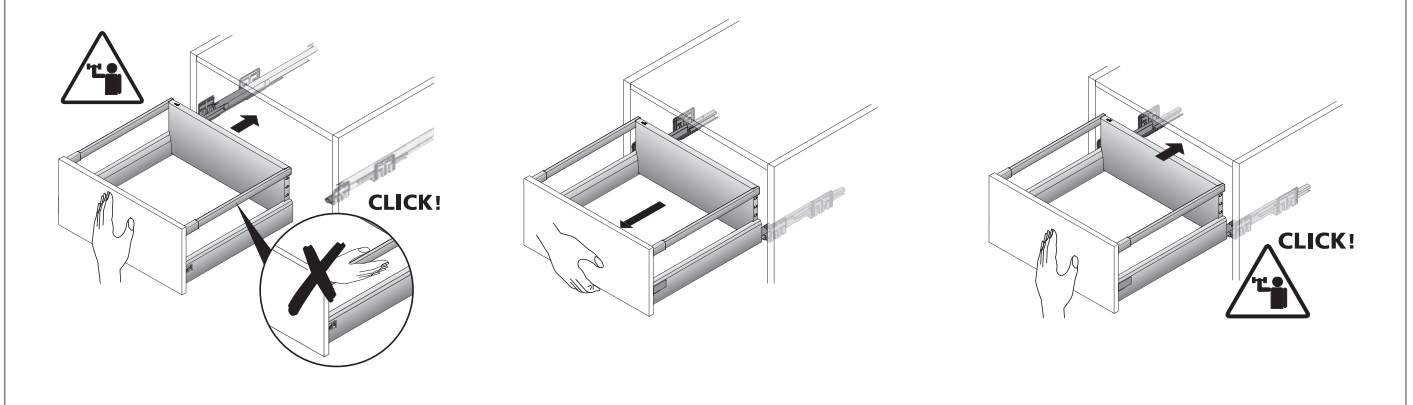
ArciTech double walled drawer system

► Assembly, adjustment, removal

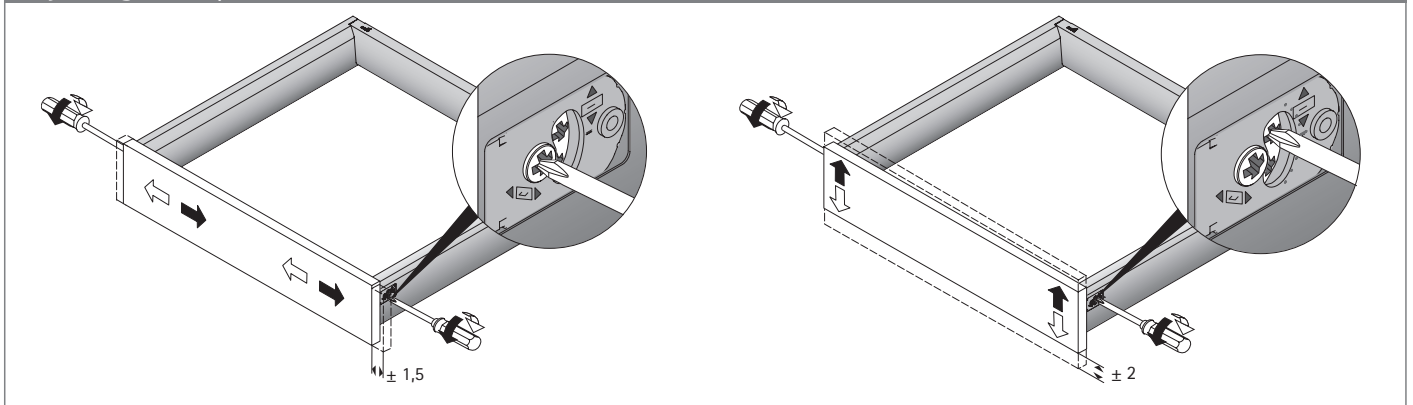
Installing Actro drawer runner



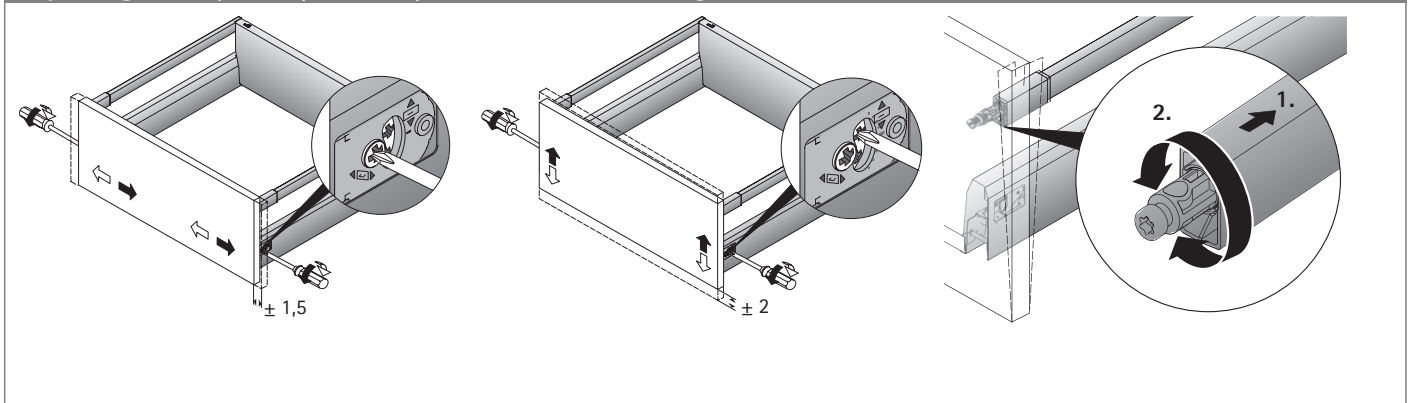
Fitting drawer / pot-and-pan drawer



Adjusting front panel, drawer



Adjusting front panel, pot-and-pan drawer with railing



ArciTech double walled drawer system

► Quality criteria

Quality that meets all the demands

The quality of the drawer systems is monitored continuously. Hettich fittings comply with the national and international quality standards of the markets our customers operate in. The diagrams below show some of the tests Hettich fittings are required to pass.

Application area

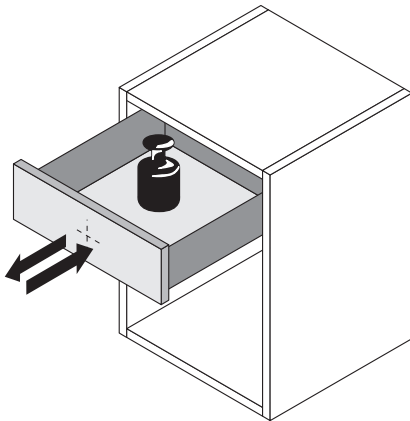
Hettich drawer systems are suitable for use in living room, kitchen, bathroom and office furniture both in the home and business environment.

Load capacity and guards preventing unintentional detachment / removal

The load capacity indicated (to DIN EN 15338) is understood to mean the weight of the drawer itself, including contents, in kg. The applicable level is shown on the product. The load capacity refers to a reference length of 500 mm. The load capacity may vary for other nominal lengths. All Hettich drawer systems feature guards to prevent the drawer from rolling out and being removed unintentionally and meet the requirements of the impact test in a test frame to EN 15338. Fitted in the proper manner, the drawer systems are suitable for furniture defined in EN 14749. The maximum front panel height depends in particular on the material, drawer size and drawer runner. Testing is conducted on drawers with a 130 mm front panel height and pot-and-pan drawers with a 300 mm front panel height. We will be pleased to provide any further information you

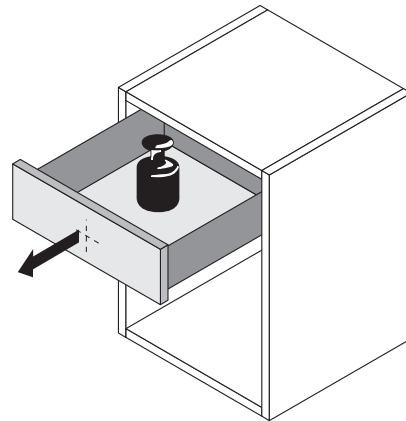
Wear test

The fully laden drawer must remain in proper working order after opening and closing it for a defined number of times at a defined test velocity.



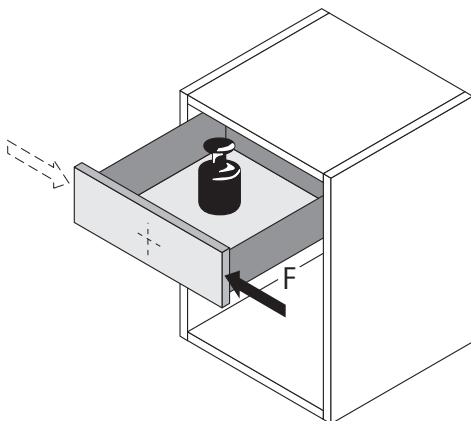
Retention-on-opening test

The fully laden drawer is abruptly opened all the way several times at a defined test velocity.



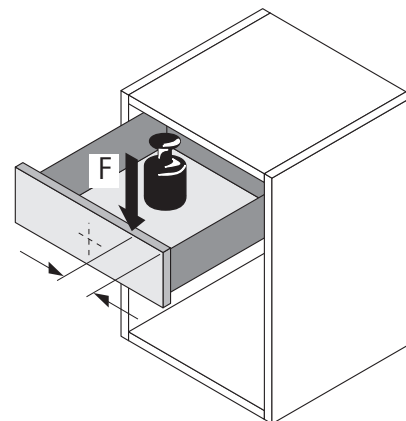
Horizontal load test

Opened all the way, the fully laden drawer is additionally exposed to horizontal strain from a defined lateral force.



Vertical strain test

Opened all the way, the drawer is additionally exposed to vertical strain from a defined eccentric force.



General technical conditions

The fitting information, screw fixing points and load capacity information contained in this document assume proper attachment using screws specified by Hettich to a chipboard panel providing a screw pull out resistance of at least 1,000 N in accordance with EN 320.

Hettich accepts no responsibility for the load capacity of furniture and its components if materials or fastening methods are used other than those stated; the furniture manufacturer must verify load capacity.

The fitting situations show in this catalogue are only intended to illustrate the possible options. The furniture manufacturer is responsible for ensuring that furniture is designed in compliance with standards, in particular with regard to meeting the requirements on safety.

We will be pleased to provide any further information you may require.

General Terms of Sale and Delivery

All products and services will be provided exclusively on the basis of our General Terms of Sale and Delivery published on our website at www.hettich-agb.com.

Legal notice

© Hettich Marketing- und Vertriebs GmbH & Co. KG
32602 Vlotho, Germany

July 2021

We reserve all rights to this catalogue under copyright law. It shall not be permissible to duplicate this catalogue in any form either in whole or in part without our written consent. Subject to technical alterations. Errors and omissions excepted. Subject to colour variations.

www.hettich.com

Hettich New Zealand

18 Barmac Place
East Tamaki, Auckland

Ph: 0800 438 842
sales-nz@hettich.com
hettich.com
shop.hettich.com

