

Note:

- These instructions assume a properly framed opening with a carefully leveled header.
- It is recommended to pre-drill all screws.

1 FRAMING AND PANEL SIZE

Finished opening height to be a minimum of 4-1/4" plus panel height. Vertical adjustment panel top to header 1/2". Vertical adjustment panel bottom to floor 1". Two panel opening width to be width of 2 panels plus pivot clearance (Table 1) plus minimum jamb clearance (Table 1) plus panel clearance needed for hinges used (minimum 1/32"). Four panel opening width is equal 2X two panel opening less min. jamb clearance.

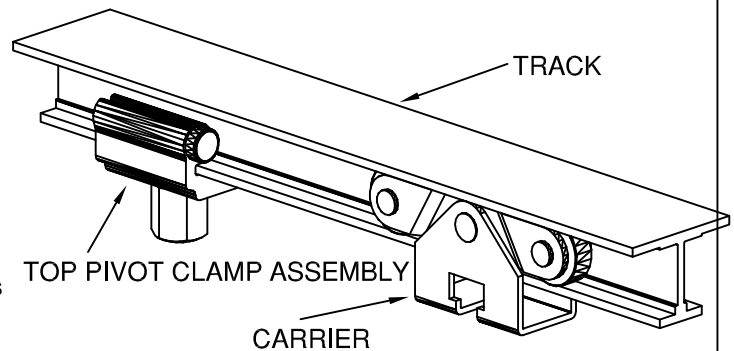
Table 1

Door thickness	1"	1-1/8"	1-3/8"	1-3/4"	1-7/8"
Pivot Clearance Allowance	1/4"	9/32"	5/16"	3/8"	7/16"
Jamb Minimum Clearance	3/16"	1/4"	1/4"	5/16"	3/8"

2 TRACK MOUNTING

Install carrier and top pivot clamp assembly in track as shown. The pendant bolt slot in the carrier should be positioned opposite to the door fold. Position the pivot clamp assembly so that the carrier wheels stop against the rubber bumpers. Fasten track to header using #12 X 1-1/4" RH screws supplied.

(Note: Carrier cannot be installed or removed after track is mounted.)



3 TOP PIVOT CLAMP ASSEMBLY LOCATION

Position top pivot clamp assembly on track with center of pivot bushing at the proper distance from the jamb (See Table 2).

Table 2

Door thickness	1"	1-1/8"	1-3/8"	1-3/4"	1-7/8"
Location Jamb to center of top pivot bushing	2"	2-1/32"	2-1/16"	2-1/8"	2-3/16"

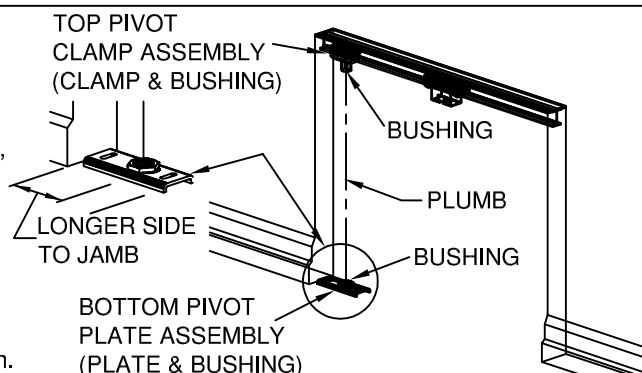
4 BOTTOM JAMB PIVOT MOUNTING

Assemble bottom pivot plate assembly.

Position bottom pivot plate assembly on the floor abutting jamb, longer side to jamb (see sketch). Fasten to floor using hexagon head screws provided.

Plumb center of bottom pivot bushing with center of top pivot bushing.

Lock bottom pivot bushing and hex screws in place with wrench.



5 MOUNT HINGES TO PANELS (Not included)

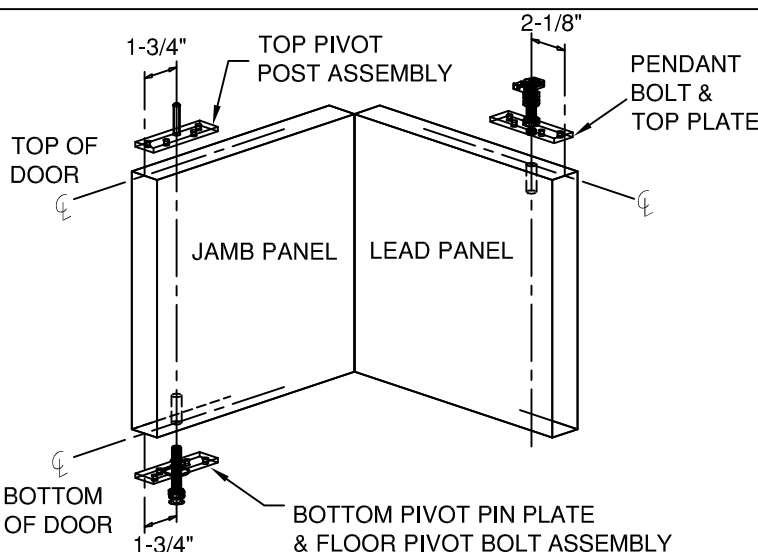
Mortise and mount hinges 4" from top and bottom of panels. Center third hinge. Provide a minimum gap of 1/32" between panels.

6 MOUNT PIVOTS, PENDANT BOLT & TOP PLATE TO PANELS

Drill 1/2" diameter hole 1-3/4" deep on center line in the bottom of jamb panel 1-3/4" from end for bottom pivot pin plate.

Drill 1/2" diameter hole 1" deep on centerline 2-1/8" in from lead edge of lead panel for pendant bolt & top plate. (See sketch)

Mount bottom pivot pin plate to jamb panel with the threaded end of the pivot in the 1/2" dia. hole. Secure assembly with 4 #12 x 1-1/4" R.H. screws. Mount the top pivot pin to the top of the jamb panel with end of plate flush with end of jamb panel on center line. Secure with 4 #12 x 1-1/4" R.H. screws. Mount top plate with pendant bolt assembly to top of lead panel. Locate threaded end of pendant bolt in drilled hole. Secure with 4 #12 x 1-1/4" R.H. screws.



7 MOUNT PANELS IN PIVOT

Fold panels and stand upright. Place top pivot post in top pivot bushing raising panels sufficiently to align bottom pivot pin with bottom pivot bushing. Lower panels seating bottom pivot pin into bottom pivot bushing.

(Extend bottom pivot pin below mounting plate sufficiently to retain engagement between both top and bottom pivots.)

8 MOUNT PENDANT BOLT AND CARRIER

Align pendant bolt on lead door with pendant bolt slot on carrier. Slide nylon seat on pendant bolt into slot in carrier. Tighten top nut with wrench, holding center nut steady, to lock pendant bolt in slot.

9 ADJUSTMENTS

Adjust carrier pendant bolt and bottom pivot pin to level doors or to adjust door height vertically. Bottom pivot must rest in bushing seat. Tighten all lock nuts to hold pivot settings.

10 OPTIONAL GUIDES

Adjustable Door Guide #1211 or 1221 and Guide Channel #1222 are available. Installation of these parts is suggested for heavy doors with frequent use.

Note:

For units where #1222 Guide Channel must be recessed into floor, specify #1221 adjustable guide roller in lieu of #1211.

