

**For 5150:**

"H" = 2 13/16"

Framed opening = 2 13/16" + Panel + 3/8"

Vertical leveling adjustment ±3/16"

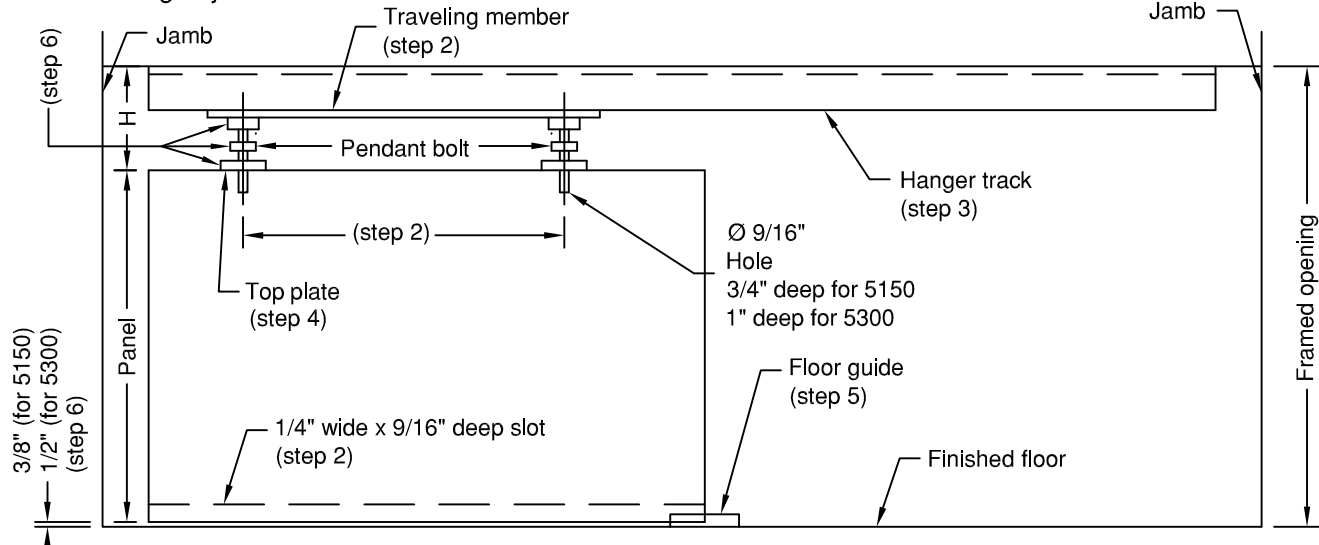
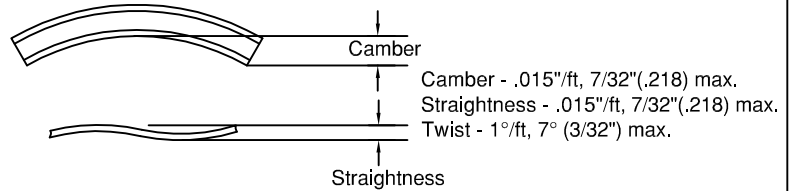
**For 5300:**

"H" = 4 5/16"

Framed opening = 4 5/16" + Panel + 1/2"

Vertical leveling adjustment ±5/16"

**Installation Limits For Door Hardware Channels/Tracks**



**Note:**

- These instructions assume a properly framed rough opening with carefully leveled header.
- It is recommended to pre-drill all screws.

**1 Splice Assembly (if required)**

If your hardware has a splice assembly, it needs to be prepared before installing as follows:

- Lay out the two outer channels on a flat clean surface, lining up the splice plates on one outer channel with the other one, leaving approximately a 6" gap in between. If your hardware has a ball cage splice, extend both ball cages out of outer channels and line up the ball cage splice plates on one side with the second ball cage. Use supplied screws to connect both ball cages. Otherwise proceed with next step.
- Slide both outer channels together, line up splice plates on the first one with the second outer channel, bolt together with supplied screws.
- Set the ball cage by moving track completely to one side of the hardware, then to the other, making sure that the track contacts the end stop on either side. This initial ball cage setting procedure will ensure that full travel is achieved.
- Check for correct alignment **before** installation by moving the inner track from one end to the other. If excessive resistance is felt, loosen outer channel splice screws and adjust alignment.

**2 Prepare Door**

Prepare door for receiving hardware as follows:

On centerline of door thickness at top, locate and bore 9/16" holes spaced to coincide with the pendant bolt bracket spacings on the traveling member of the hanger (see illustration above for hole depth). Cut a continuous 1/4" wide x 9/16" deep slot in bottom of door for floor guide.

**3 Mounting Hanger Track**

Attach track with screws provided.

**4 Top Plate**

Position top plates on top of door so that tapped holes are directly over holes previously bored in top of door. Attach top plates with screws provided. Insert pendant bolts into threaded holes of top plates.

**5 Floor Guide**

Mount floor guide plumb with track as necessary using screws provided.

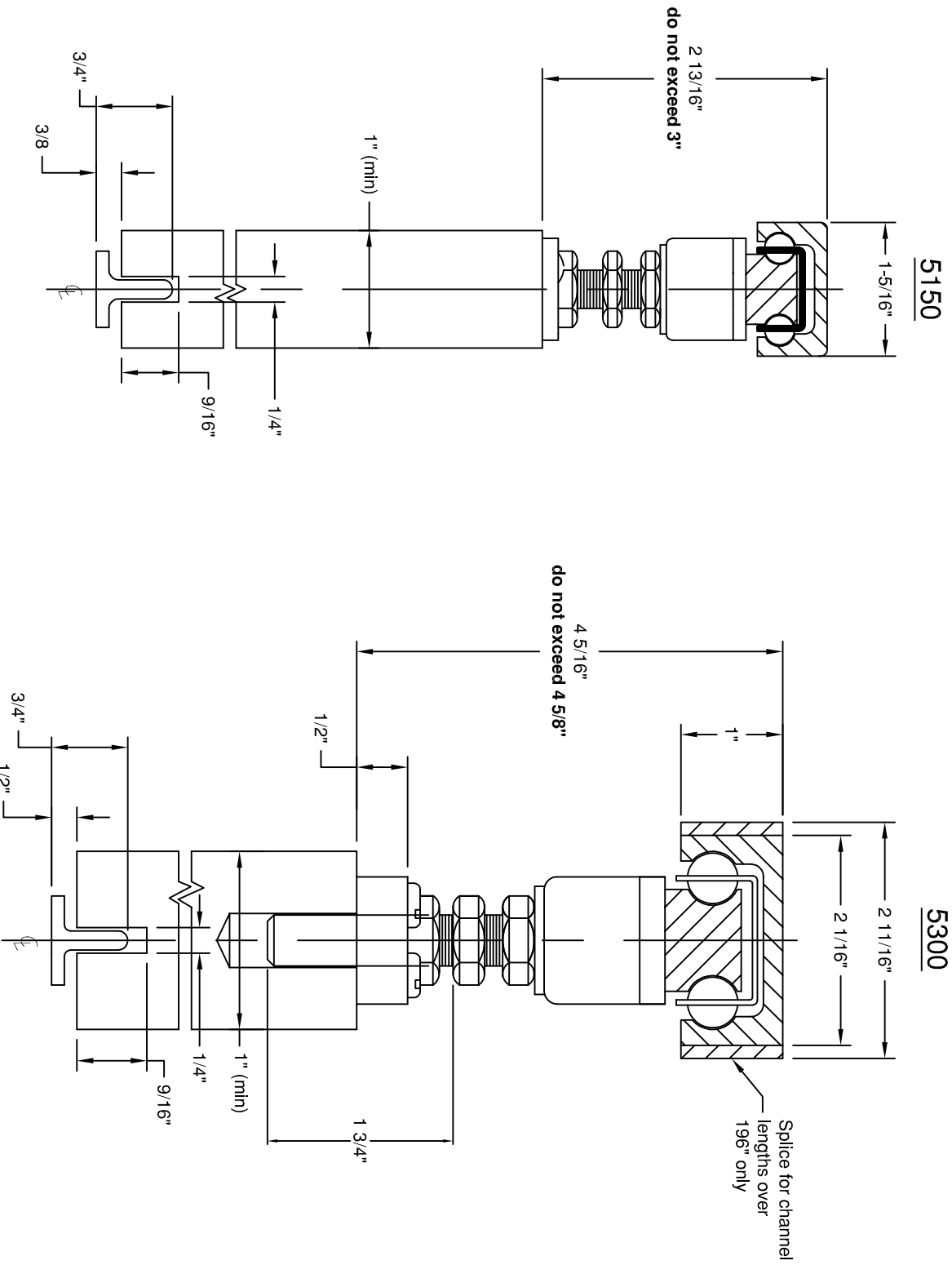
**6 Mounting Door**

Raise door and insert pendant bolt heads into slots of hanger brackets. By means of turning the stationary nut on pendant bolt to left or right, raise or lower the door to confirm the clearance dimension from the floor to the bottom of door (3/8" for 5150, 1/2" for 5300).

**7 Adjustments**

After door has been adjusted for bottom clearance, tighten jam nuts down on top plates. Adjust one pendant bolt at a time for lateral clearance, tighten up jam nuts against bottom of hanger brackets. Door should now travel back and forth freely.

071-11-0002-00-0, Rev. G [INSTRUC\071-11-0002-00-0]



**Note: Do not exceed maximum headroom dimension.**