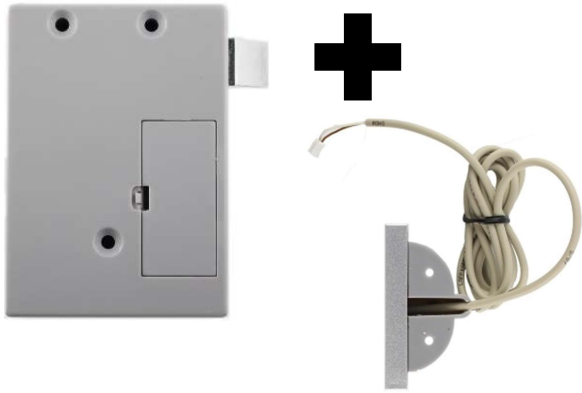
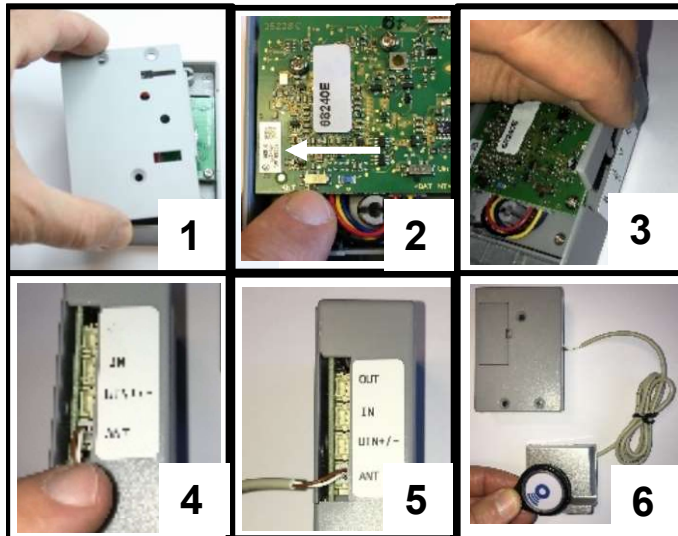


externe Antenne
für Multireader Schloss
external antenna
for Multireader lock

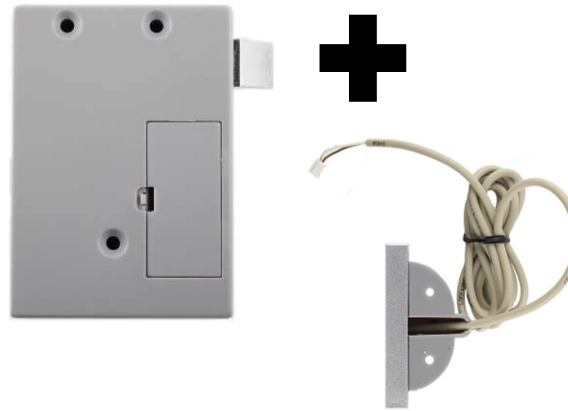


1. Deckel öffnen
2. Schalter nach links
3. Fenster heraus nehmen
4. Antenne anstecken
5. ANT Anschluss
6. Transponder testen

1. open cover
2. move switch left
3. take window out
4. install antenna
5. ANT connection
6. test transponder

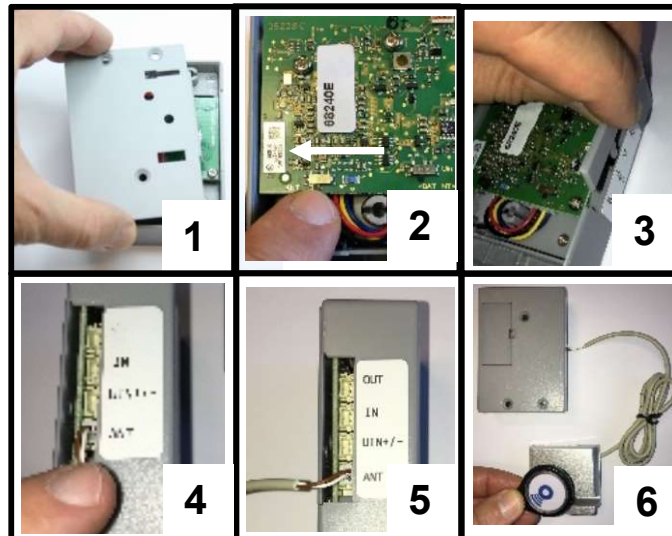


externe Antenne
für Multireader Schloss
external antenna
for Multireader lock

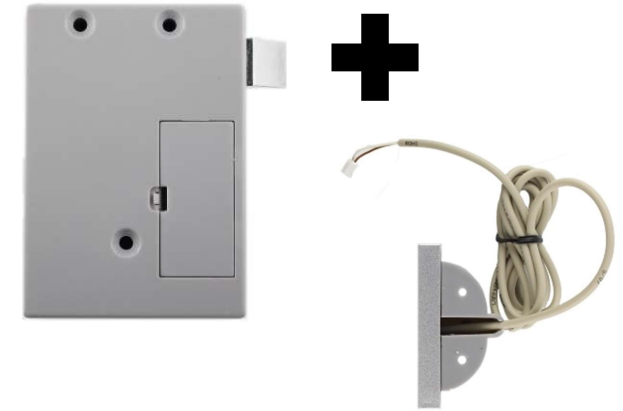


1. Deckel öffnen
2. Schalter nach links
3. Fenster heraus nehmen
4. Antenne anstecken
5. ANT Anschluss
6. Transponder testen

1. open cover
2. move switch left
3. take window out
4. install antenna
5. ANT connection
6. test transponder



externe Antenne
für Multireader Schloss
external antenna
for Multireader lock



1. Deckel öffnen
2. Schalter nach links
3. Fenster heraus nehmen
4. Antenne anstecken
5. ANT Anschluss
6. Transponder testen

1. open cover
2. move switch left
3. take window out
4. install antenna
5. ANT connection
6. test transponder

