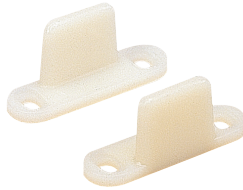


Floor Guides

Floor guide 110

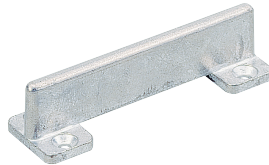
Nylon, sold in pairs
Screws included



Finish	Order no.	PU
N/A	050 101	50 sets

Floor guide 7015

Zinc diecast
Dimensions:
3" x 7/8" x 3/4" (76.2 x 22.2 x 19 mm)
Screws included



Finish	Order no.	PU
Zinc diecast	050 562	50

Continuous floor guide 2014

Aluminum
3/16" (4.7)
1/2" (12.7)
7/8" (22.2)
1/8" (3.2)

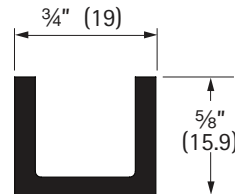


Length	Order no.	PU
6' (1800 mm)	050 448	5
8' (2400 mm)	050 449	5
10' (3000 mm)	050 450	5
12' (3600 mm)	050 451	5

Screws not included - recommend #6 Flat Head, pre-drilled holes

Guide channel 1222

Aluminum extruded



Length	Order no.	PU
4' (1200 mm)	050 142	5
5' (1500 mm)	050 143	5
6' (1800 mm)	050 144	5
8' (2400 mm)	050 145	5
10' (3000 mm)	050 146	5
12' (3600 mm)	050 147	5
16' (4800 mm)	050 148	5

Guide roller 1211

Steel, non adjustable
Screws included



Article	Order no.	PU
Guide roller 1211	050 138	20

Guide roller 1221

Steel, adjustable
Screws included

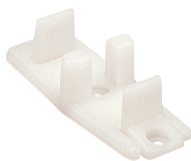


Article	Order no.	PU
Guide roller 1221	050 141	20

Floor Guides

Floor guide 114

Nylon,
Adjustable for 3/4" to 1 3/8" doors
Screws included



Finish	Order no.	PU
N/A	050 102	50

Floor guide 116

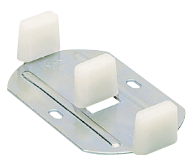
Steel, Nylon
Screws included



Finish	Order no.	PU
zinc-plated	050 103	50

Floor guide 117

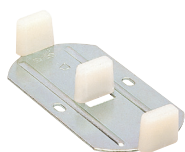
Steel, Nylon
Screws included



Finish	Order no.	PU
zinc-plated	050 104	50

Floor guide 118

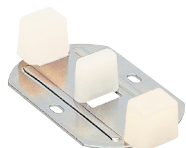
Steel, Nylon
Screws included



Finish	Order no.	PU
zinc-plated	050 105	50

Floor guide 119

Steel, Nylon
Screws included



Finish	Order no.	PU
zinc-plated	050 106	50